

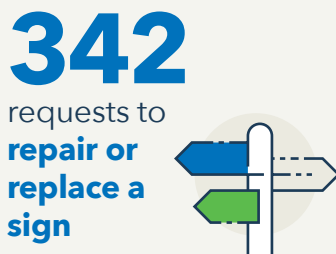
Highlights from Transport

Looking after our network

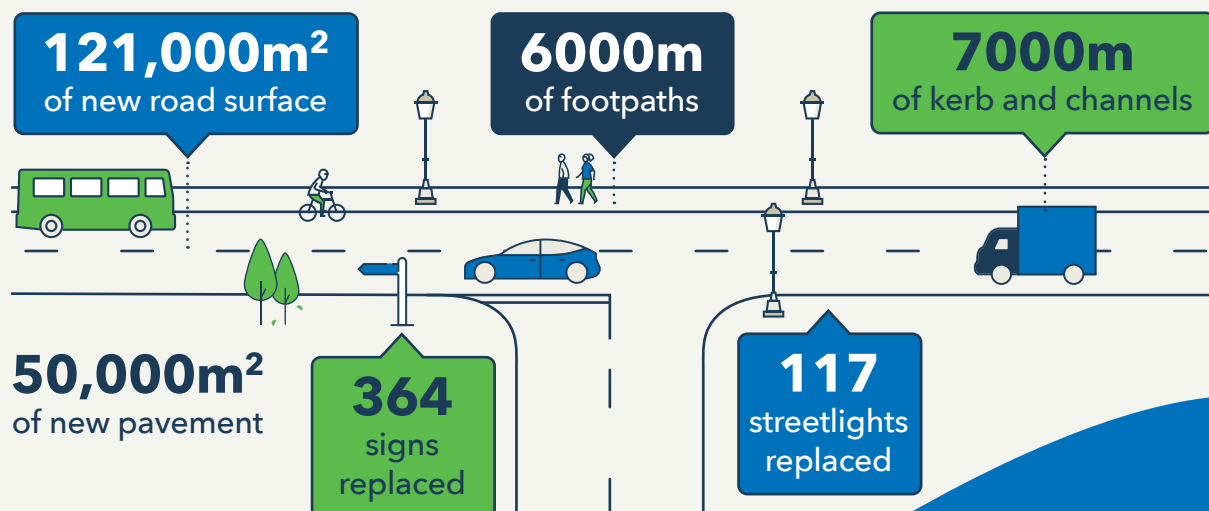
Connect Hamilton is Council's partnership with Downer NZ, who takes care of the maintenance and renewals of the city's roads, footpaths, traffic lights, streetlights, signs, guardrails, bridges, road marking, bus shelters, sweeping and vegetation.



Top three most common service requests since July 2023:



We maintained or renewed:



Who's using our network?

1219

people walking
in the central city
(Jan - Mar 2024)

2% less than
Jan-Mar 2023



64,000

people on bikes across
eight locations in the city
(Jan - Mar 2024)

4% more than
Jan-Mar 2023



20%



more - bus trips
were made in

Hamilton between
Jan-Mar 2024 compared to
the same time in 2023.

425 EV vehicles

are registered in the urban areas of the Waikato in 2023

Up 36% from 2022



Parking

68



new electronic
parking kiosks were
recently installed to
replace old, obsolete
parking meters.

300 all day paid parking spaces now in place.

The latest locations include Hill Street near Ruakiwi Road, Ruakiwi Road near Hamilton Lake Domain, Tainui Street near Hamilton Girls' High and Victoria Street near Mill Street.



An updated Parking Policy
was approved.

Safety

16 crashes
involving high speed
(Oct-Dec 2023)

21 less than
Oct-Dec 2022



18 crashes involving
pedestrians or people on
bikes (Oct-Dec 2023)

7 of those involved a
serious injury or death

Improvement projects



The roll out of the reduced speed limit of 30km/h around schools to keep our tam-ariki safe is planned to be in place by the start of schools' second term.

Ulrich Ave's new raised safety crossing (near Melville Primary School's rear entry), new signage and disabled parking upgrade was finished.



Wairere Drive/ Gordonton Road

roundabout safety upgrade completed including raised safety platforms on the roundabout entries and new guard rail.

Lake Domain Drive's intersection transformation, to a more-visible T-intersection, raised safety crossings and additional safety upgrades, was completed.

Climate Emergency Response Fund (CERF) Transport Choices Programme

6 projects completed:



- Bus Shelter Replacements Citywide
- Hukanui Road Bus Stops
- Lake Road/Commerce Street
- Pembroke Street - o/s YMCA
- Killarney Road - Queens Avenue to the Western Rail Trail
- Anglesea Street (south).

4 projects under construction:



- Heaphy Terrace (Boundary Road to Brooklyn Road)
- Claudelands Park Connection
- End of Trip Facilities Citywide (Bike and Scooter Parking)
- Rifle Range Road.



2 projects to start:




- Hayes Paddock - planned for April 2024
- Rotokauri Road/Baverstock Road Bus Stop and Accessibility - planned for June 2024.

17 projects were removed

from the to-do list following a Council decision.



Road safety education

350 
students

were introduced to a new scooter programme in

4 schools

20% increase

in active ways of travelling at both
Whitiora and Te Ao Marama schools



19 
people through the
young driver programme

46 riders

through the motorcycle
training (17 novice and
29 experienced)



51 students

attended the SADD workshop
(Students Against Dangerous Driving)



72 **Council staff**
trained to
use a fleet e-bike

4 **City Safe staff**
trained to use
their work e-bikes



Kids on bikes



10 schools, 995 students



86 students learning to ride a bike for the first time